

# iQuartz6 Series

Advanced Quartz Crystal  
Pressure and Temperature  
Downhole Memory Gauge\*

*\* Qualified as per the WES*



*View of external communication port, quartz and below*

## // ENHANCED ELECTRONIC PERFORMANCES

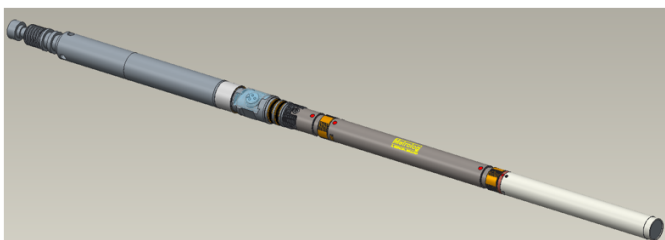
- Enhanced metrology specific tions (resolution).
- More autonomy, more memory capacity.
- ASIC-driven Multi-Chip Module (Hybrid-type electronic board).

## // INNOVATIVE BREAKTHROUGH / BENEFITS

- User-friendly and safely handling system.
- Compact external communication port.
- IP68 & shockproof electronic compartment.
- Ring locked battery connection.
- Environmentally responsible smart batteries.

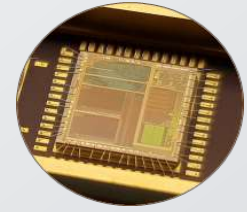
## // APPLICATIONS

- Downhole reservoir testing : DST, interference testing and long term jobs.
- Exploration or appraisal testing : HPHT, hostile and extreme temperature wells test.
- Pressure surveys in production wells : static/ dynamic gradient and build-up test.
- Long term monitoring test.



**Metrolog**  
A SERCEL BRAND  
ANYWHERE • ANYTIME • EVERYTIME

# iQuartz6 Series



ASIC driven

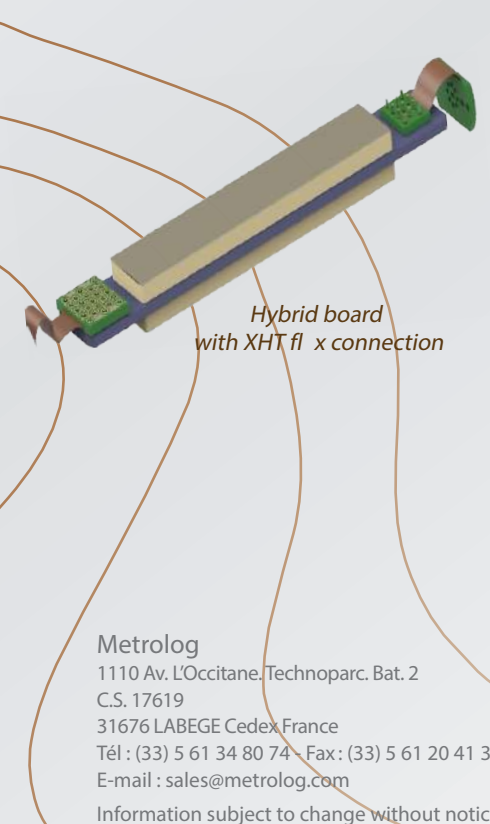
Advanced Quartz Crystal  
Pressure and Temperature  
Downhole Memory Gauge\*

\* Qualified as per the WES

## METROLOGY

Gauge Name	iQuartz6	iQuartz6-HT	iQuartz6-XHT
<b>Pressure</b>			
Range	From atm. pressure to 10kpsi up to 20kpsi (Atm. to 700 to 1400 bar)		
Accuracy	± 0.02% FS		
Resolution	<0.01 psi (<0.008 bar)		
Drift	<0.02% full scale per year		
<b>Temperature</b>			
Operating Range*	0 to 300°F (-20 to 150°C)	0 to 350°F (-20 to 177°C)	0 to 392°F (-20 to 200°C)
Accuracy	± 0.3°F (± 0.15°C)		
Resolution	<0.01°F (<0.005°C)		
<b>Battery type</b>			
Temperature < 150°C 150°C < Temperature < 200°C	Z15-G6, LZ15-G6	Z20-G6, 2Z20-G6	Z20-G6, 2Z20-G6

\* Calibrated range starts at ambient temperature (20°C)



Hybrid board  
with XHT flange connection

## Mechanics

Material	17-4PH suitable for sour services ≤ 15 kpsi MP35N ≥ 15 kpsi Inconel 718 on demand
OD	3/4" (19 mm)
Length	20" up to 27" (51 to 69 cm)
Weight	1.3 lb (0.58 kg)
Threads	5/18" 11 UNC (pin up x box down) or non threaded housing (insert)
Bottom Nose	1/4" NPT (box)

## Computer & Software (Powered by Metrowin)

Programming Modes	Conventional, Advanced
Parameters	1/100s-18h Scanning Rate, Time delay, Pressure start (Trigger, Threshold)
Windows	Compatible from Windows 7 to Windows 10
Connector	USB
Memory Capacity	8.4M data points of pressure and/or temperature

Metrolog  
1110 Av. L'Occitane, Technoparc, Bat. 2  
C.S. 17619  
31676 LABEGE Cedex France  
Tél : (33) 5 61 34 80 74 - Fax: (33) 5 61 20 41 31  
E-mail : sales@metrolog.com

Information subject to change without notice. TDSO\_077\_AA

[www.metrolog.com](http://www.metrolog.com)

**Metrolog**  
A SERCEL BRAND  
ANYWHERE • ANYTIME • EVERYTIME